

Blood

Lecturer / histology
Dr. Shatha Salah Osaad
Anatomy Department
Al-Kindy College of medicine

Composition of whole blood

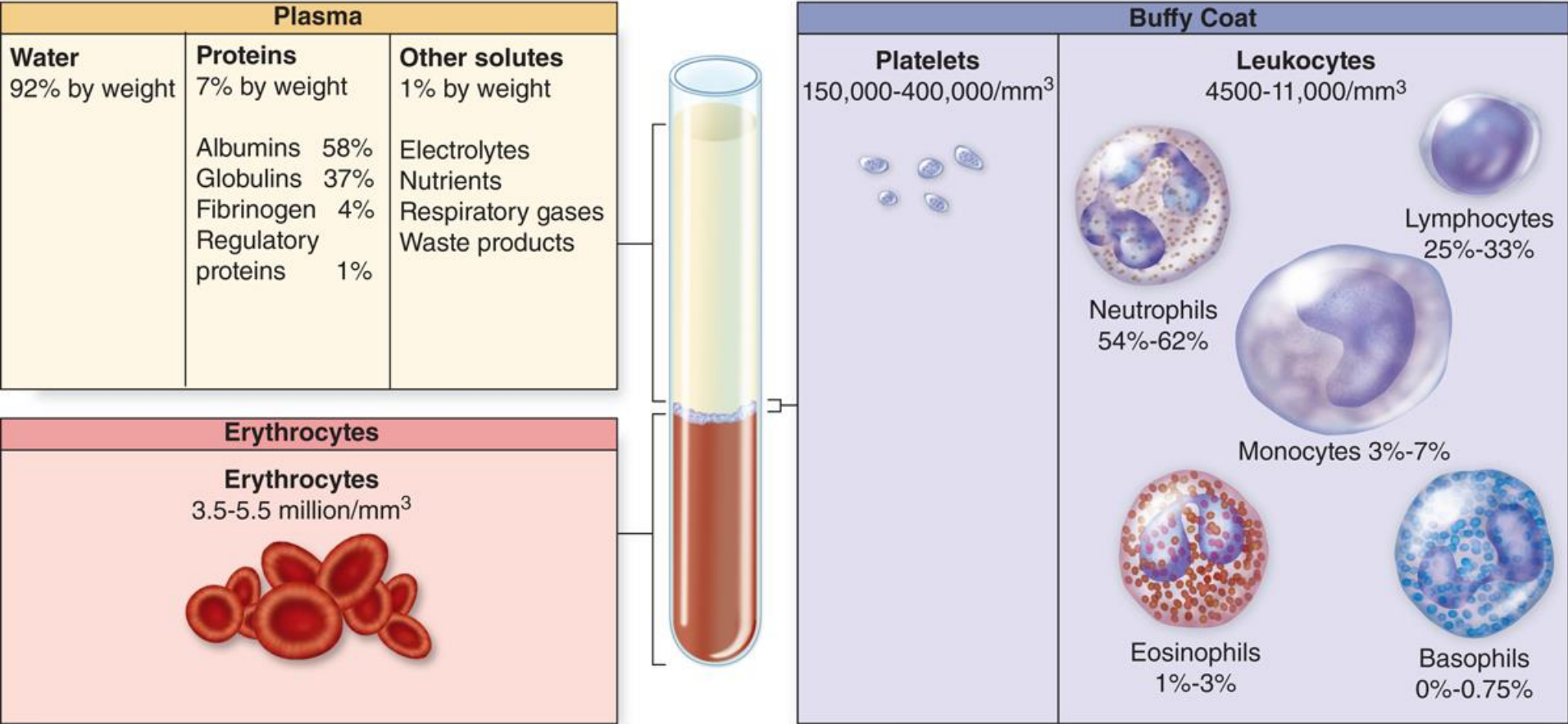
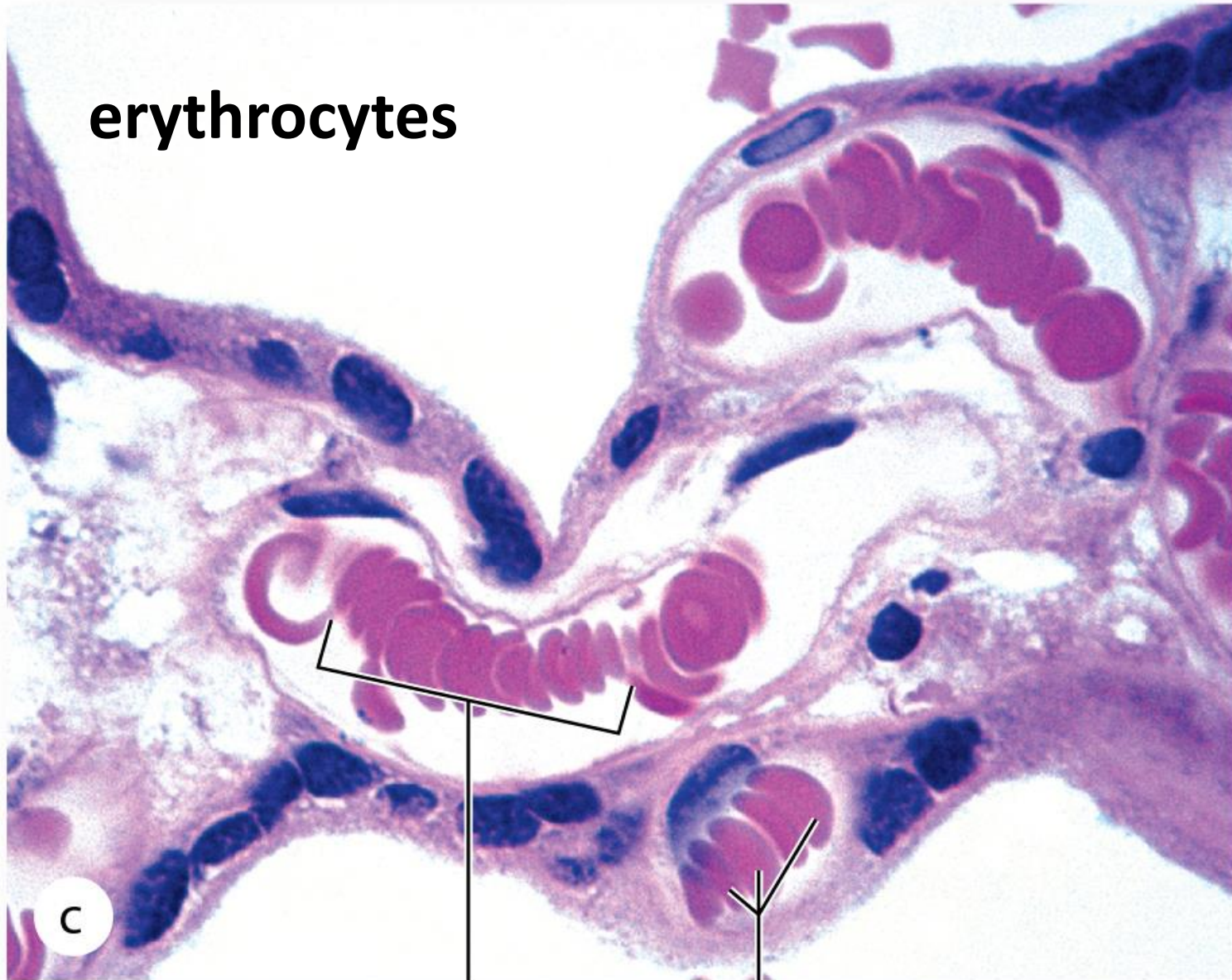


Figure 12-1

erythrocytes



C

Rouleaux

Erythrocytes

Leukocytes, or white blood cells (WBCs)

a. Granulocytes :

include **neutrophils**, **eosinophils**, and **basophils**

b. Agranulocytes: lack specific granules.
They include **lymphocytes** and **monocytes**.

Neutrophils

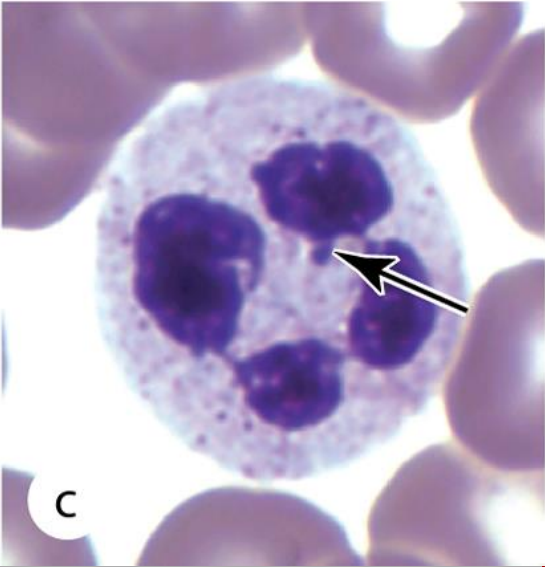
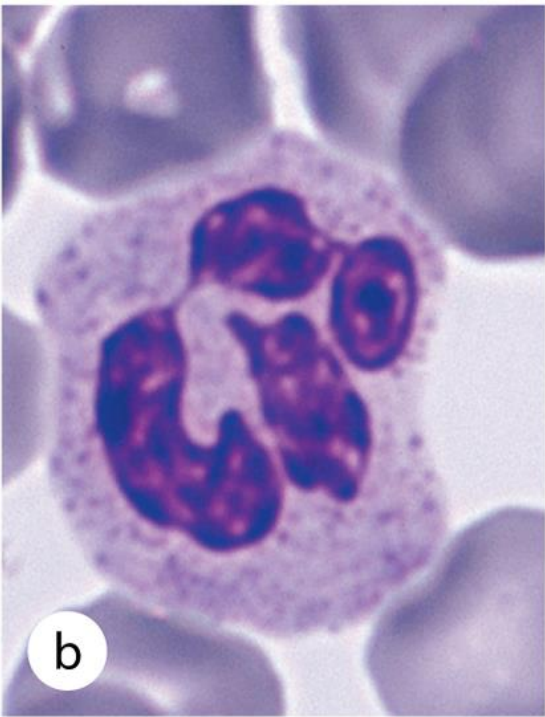
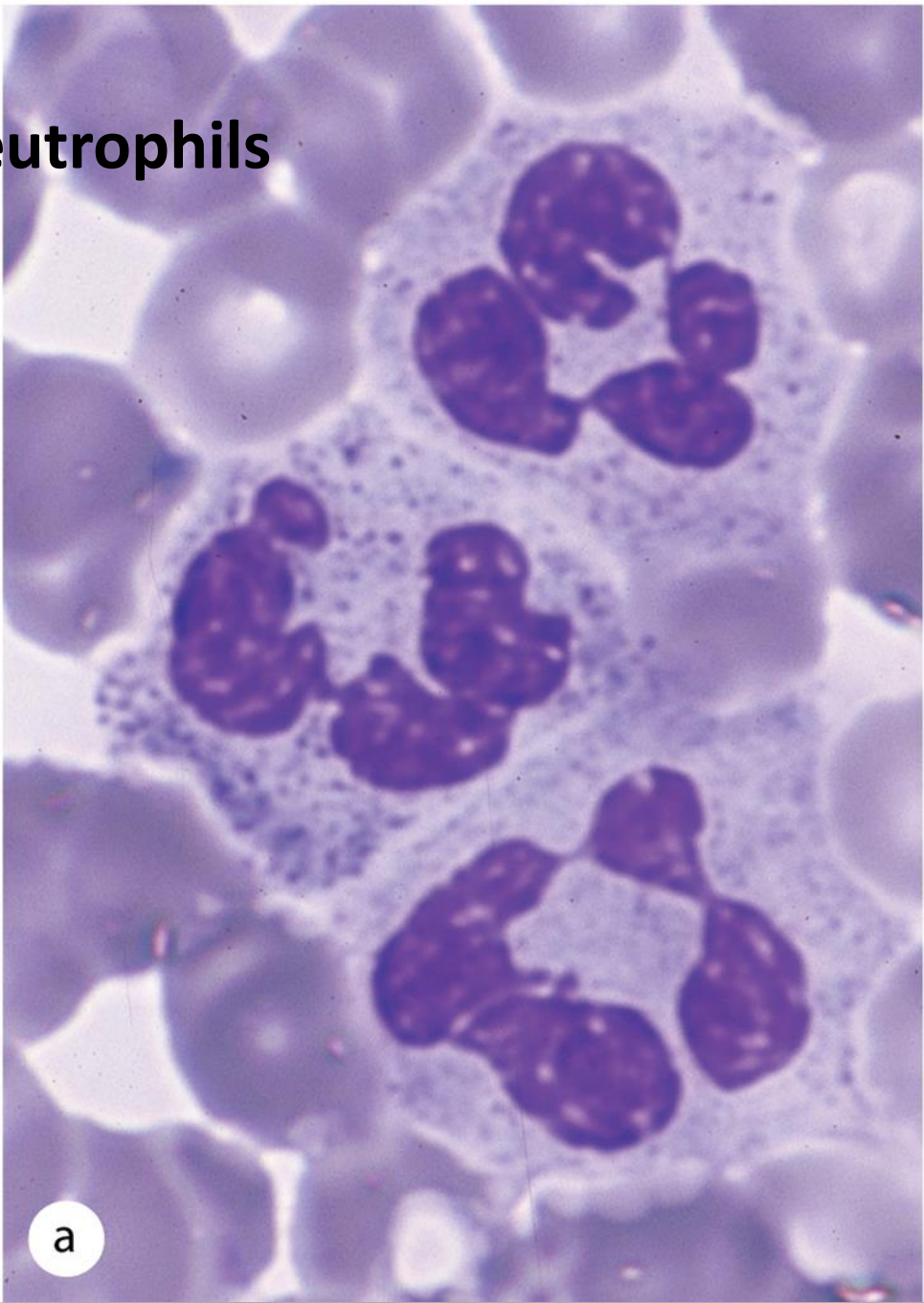


Figure 12-7

Eosinophils

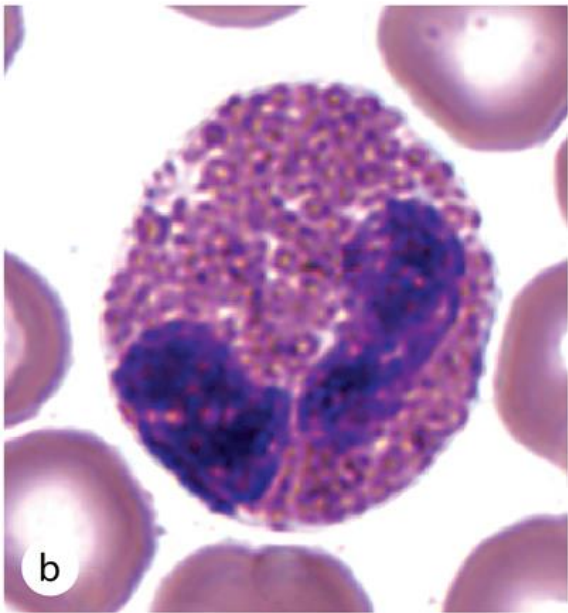
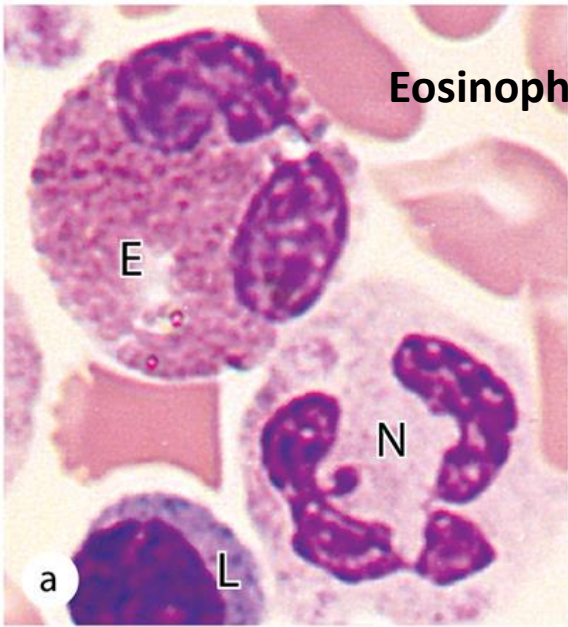


Figure 12-9

Basophils

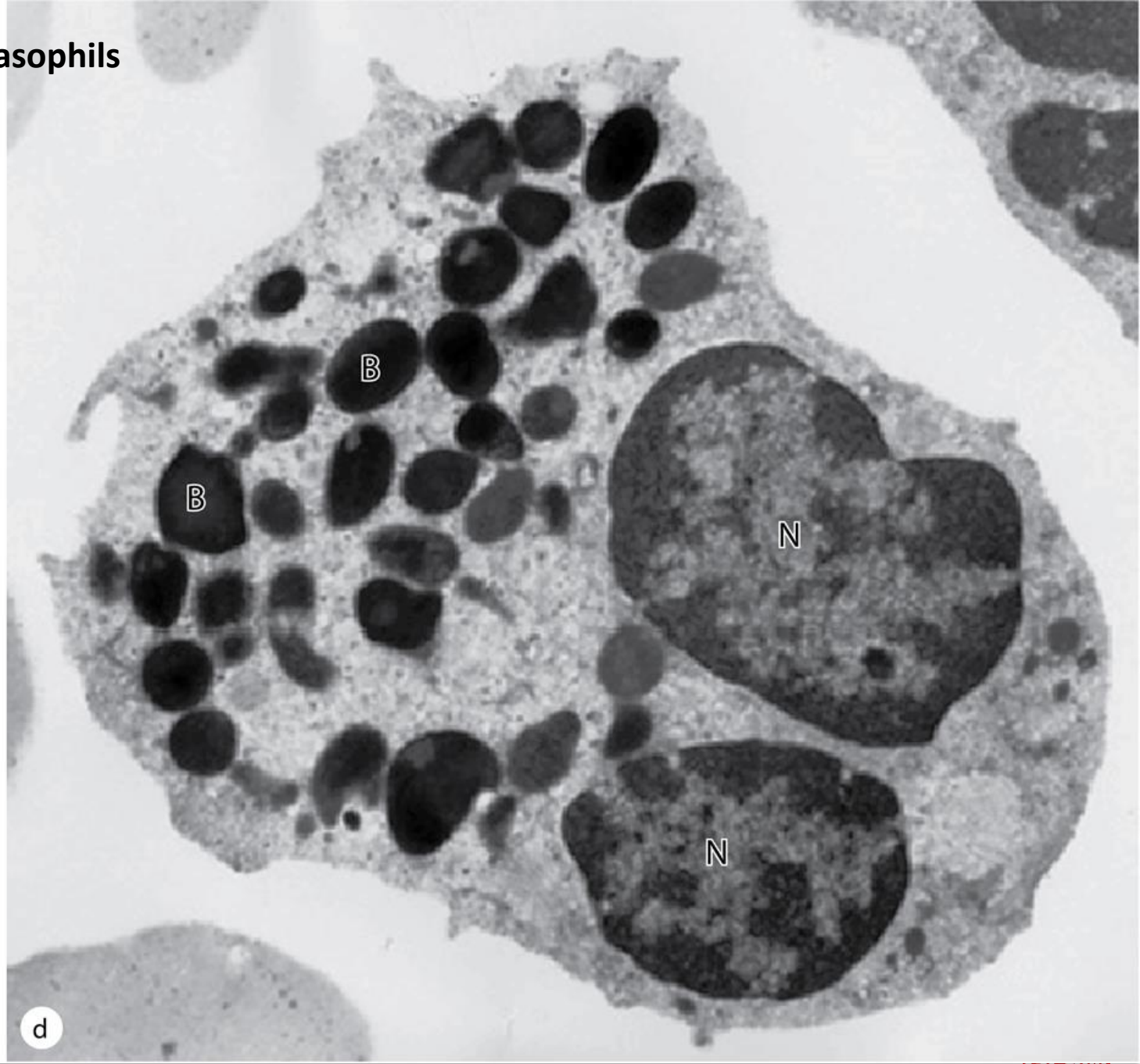
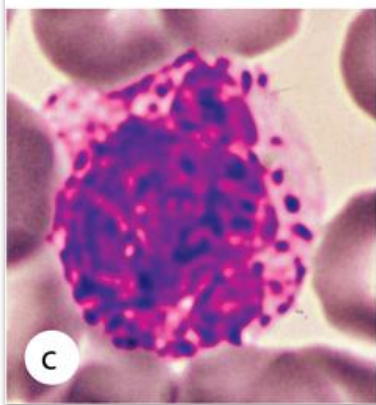
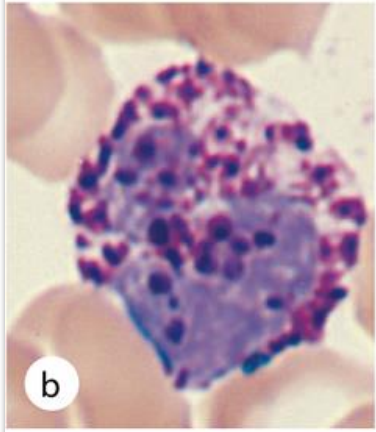
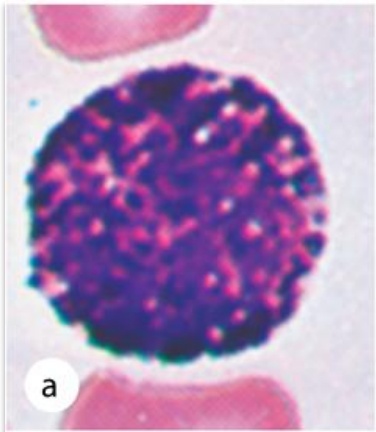


Figure 12-10

Lymphocytes

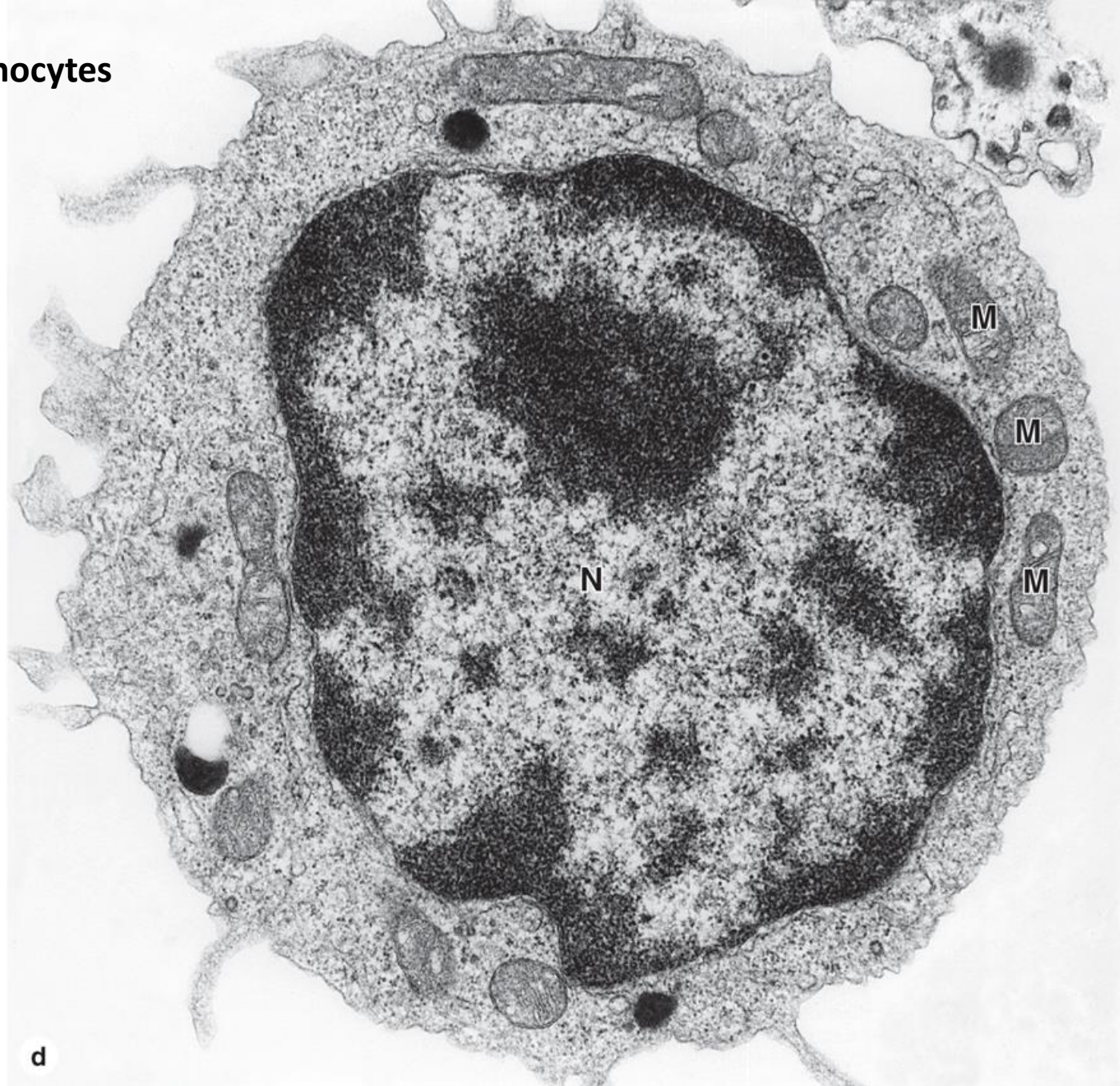
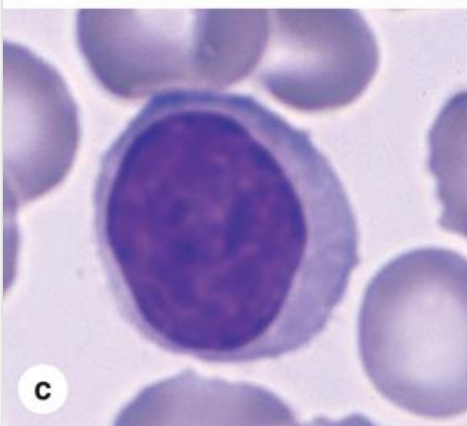
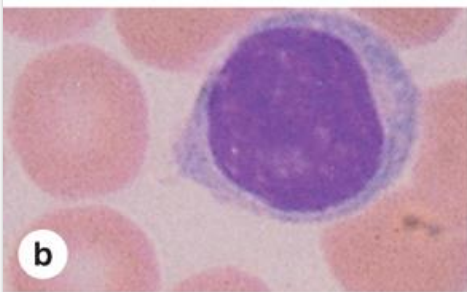
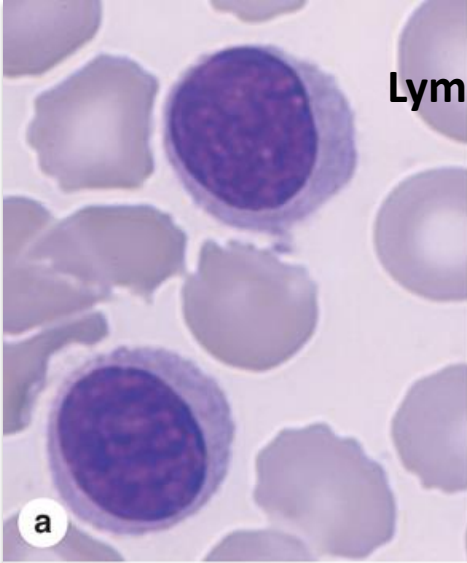


Figure 12-11

Monocytes

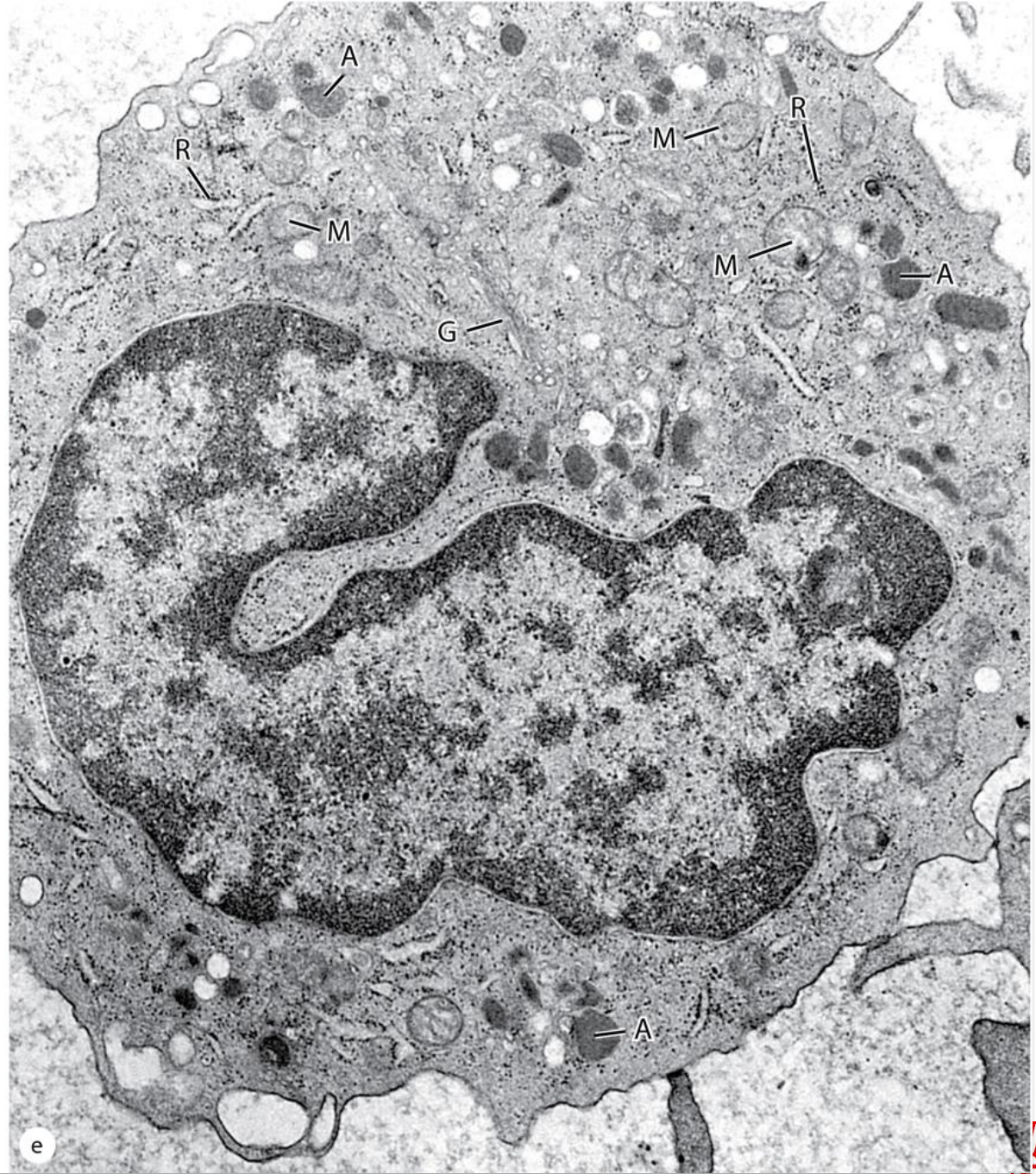
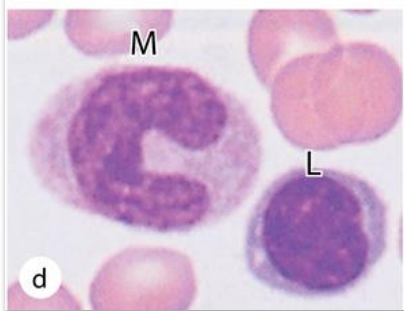
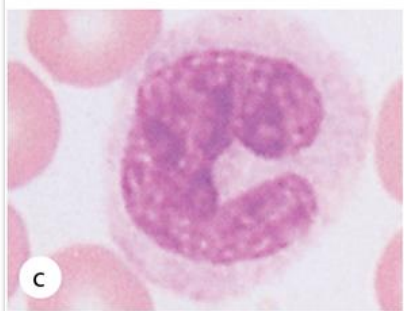
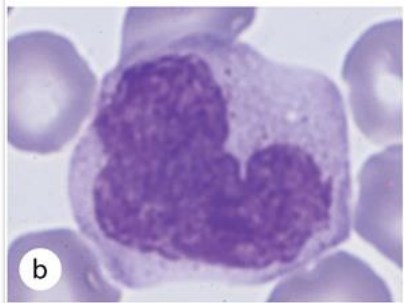
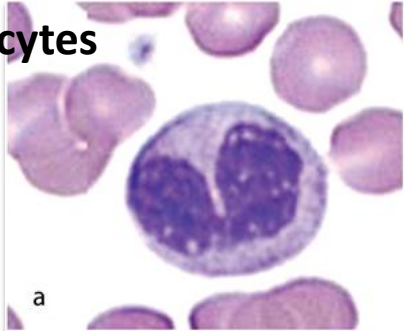


Figure 12-12



Platelets

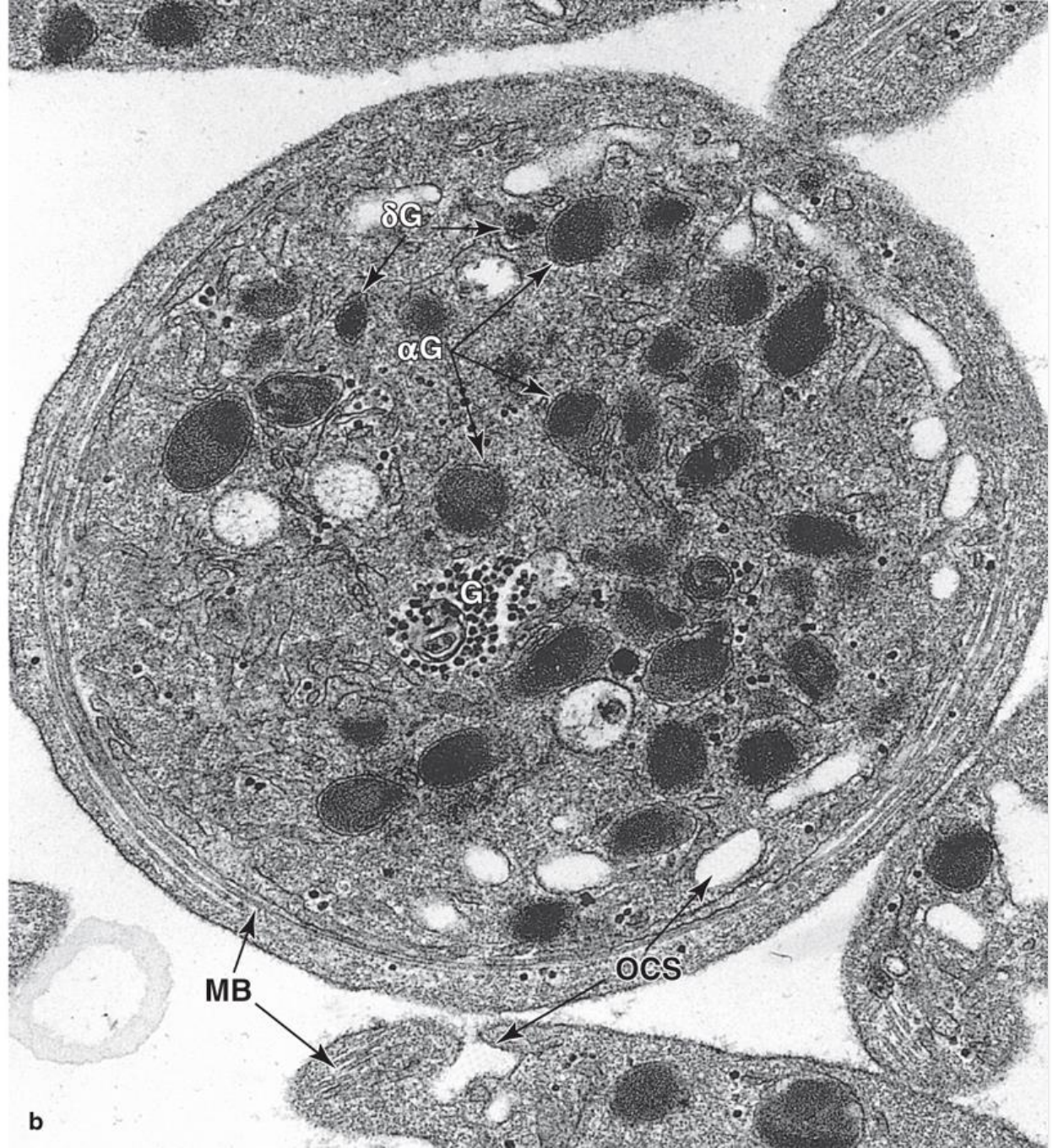
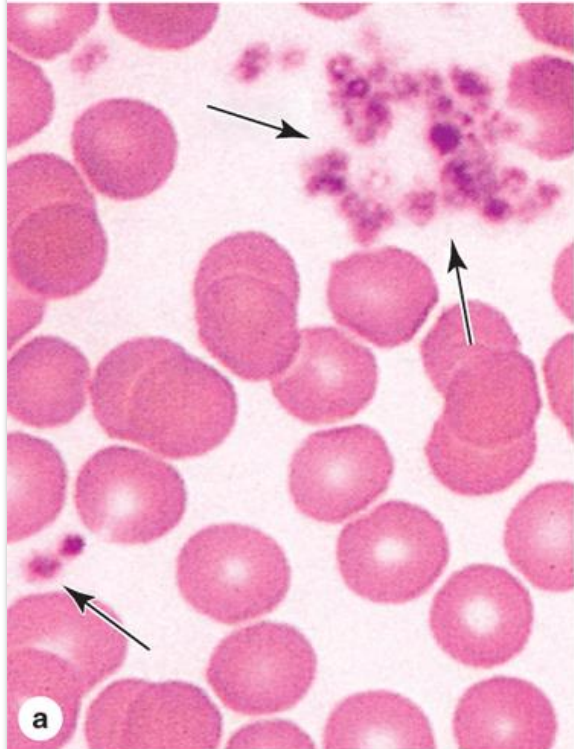


Figure 12-13

Hemopoiesis

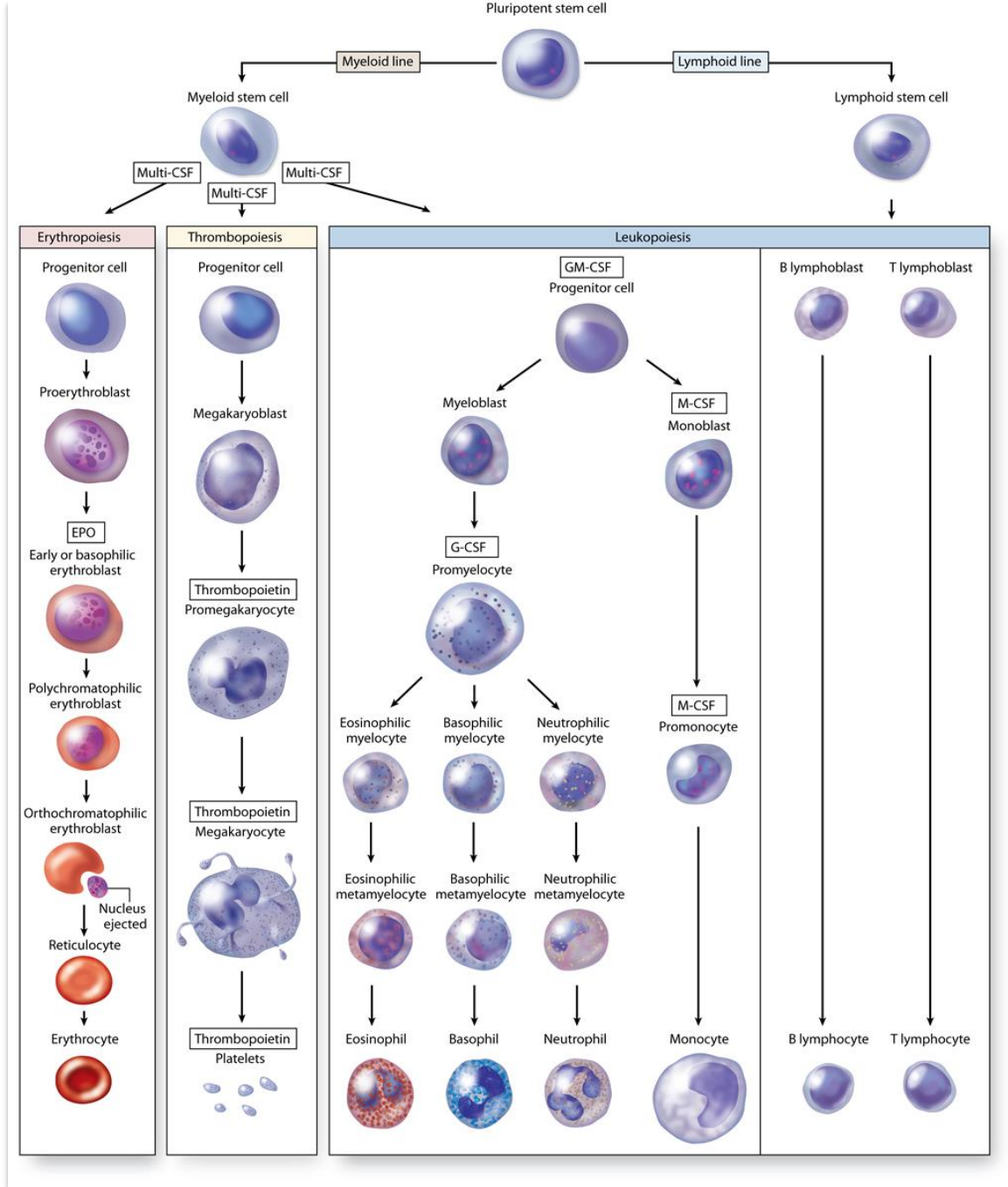


Figure 13-2

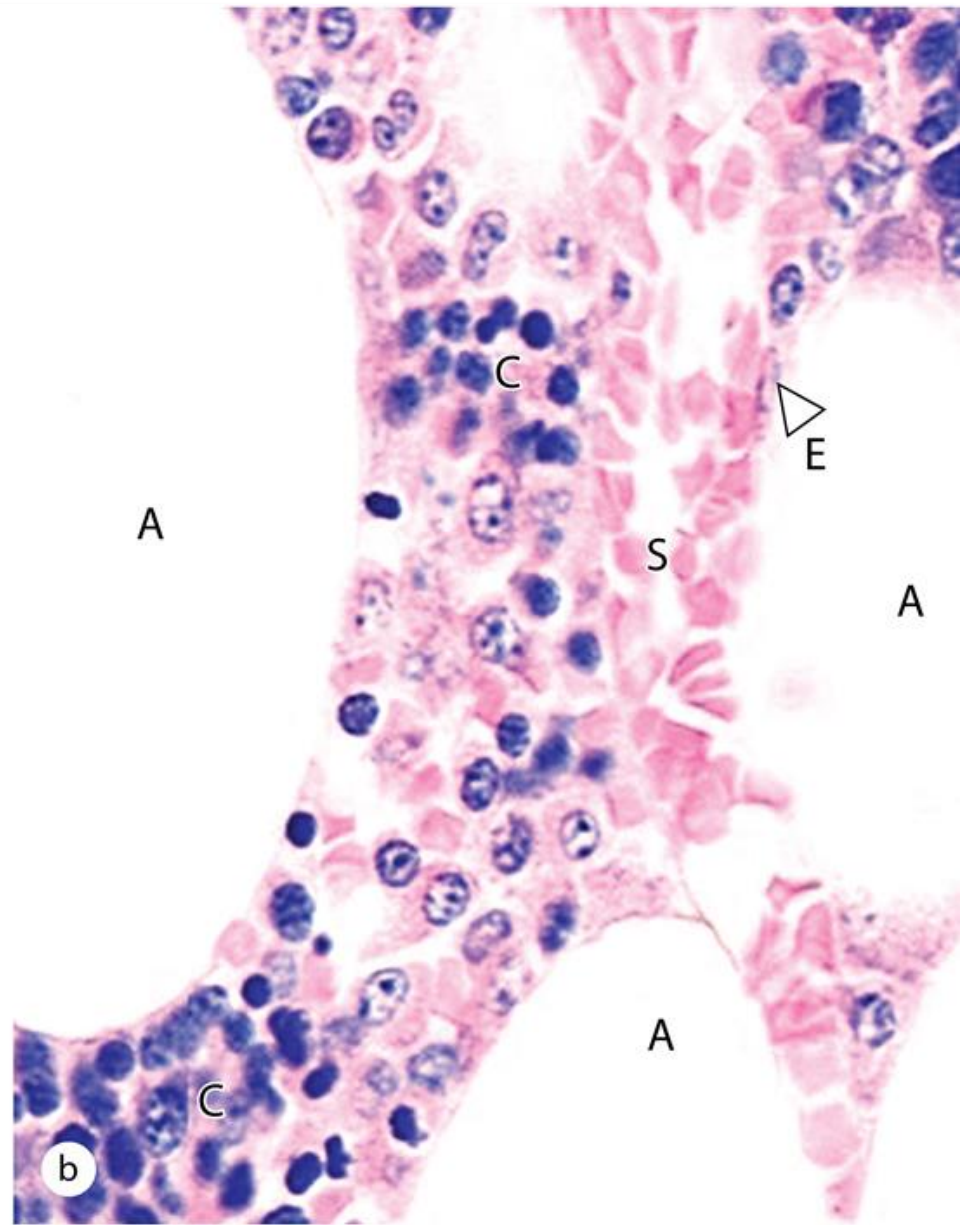
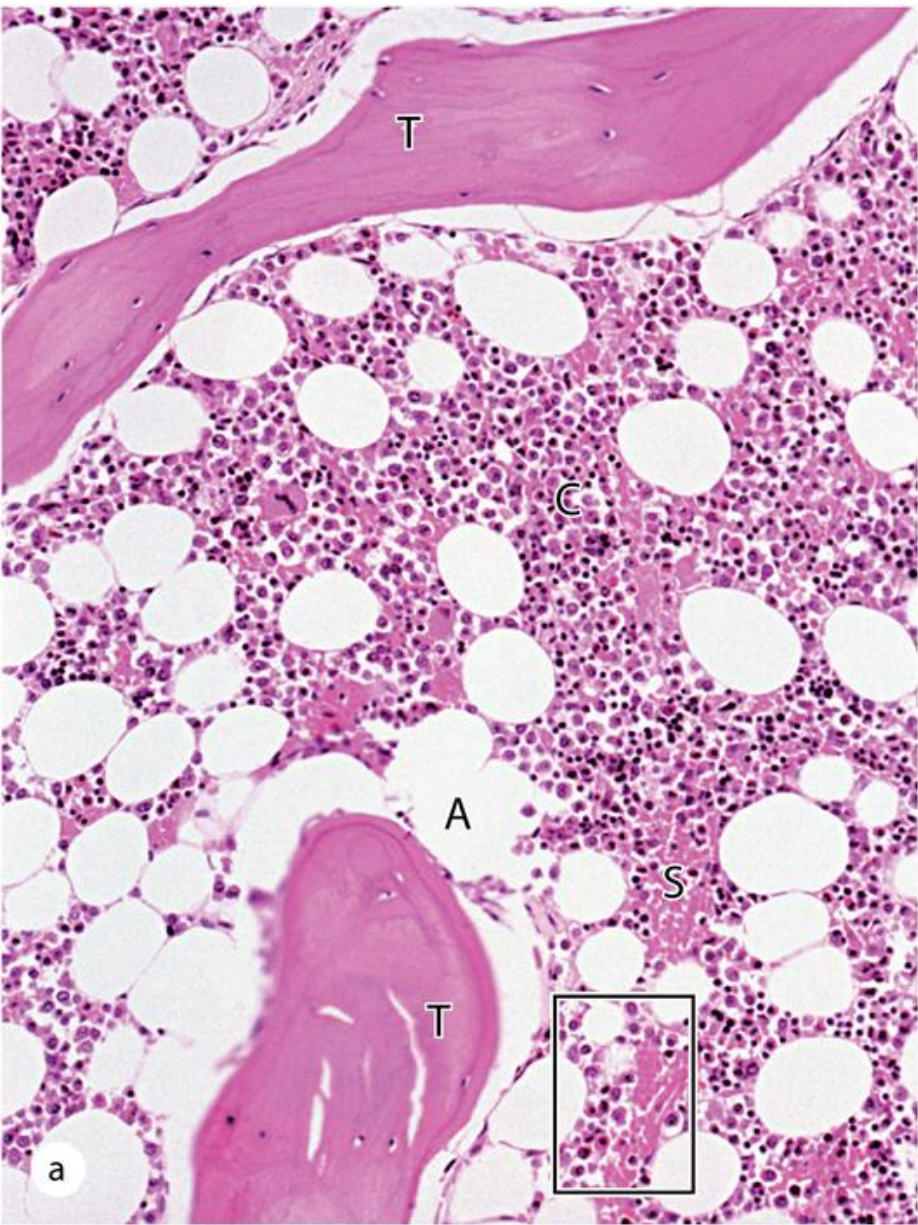


Figure 13-4

A microscopic view of a blood vessel, showing several red blood cells (erythrocytes) in motion. The cells are biconcave discs, appearing as reddish-orange structures against a darker red background. The vessel walls are visible as thin, curved lines. The overall scene is illuminated with a strong red light, creating a warm and vibrant atmosphere.

Thank You